

WithSecure™ Elements Collaboration Protection

Safeguard your hybrid work. Stop advanced cyber threats in your Microsoft 365 environment.

Protecting hybrid work is hard work

Hybrid work is here to stay and so are digital collaboration tools. Collaboration applications and file sharing services are becoming richer in flavor, yet email still holds its position as an essential medium – and entry point for cybercriminals.

Email is one of the largest attack vectors, and a common way for attackers to slip in malicious content. As well as spreading malware, attackers use phishing attacks and social engineer-

ing to steal company credentials. This gives them the means to access internal information, distribute malicious emails, and perform social engineering attacks – for instance, by posing as a company employee.

Microsoft 365 is the most popular email service globally. Wide adoption of this cloud-based service is compelling attackers to design methods that slip through Microsoft's standard security controls. This means there is an increased demand for more advanced defensive measures.



23% of successful malware attacks were delivered by email in 2021. (Verizon Data Breach Investigations Report 2021)

Compromised credentials was the most common attack vector in 2021, present in 20% of breaches. (Ponemon Cost of a Data Breach Report 2021)

Microsoft 365 is the world's most popular cloud collaboration service, with 300 million paid Microsoft 365 seats and 145 million daily users on Microsoft Teams.

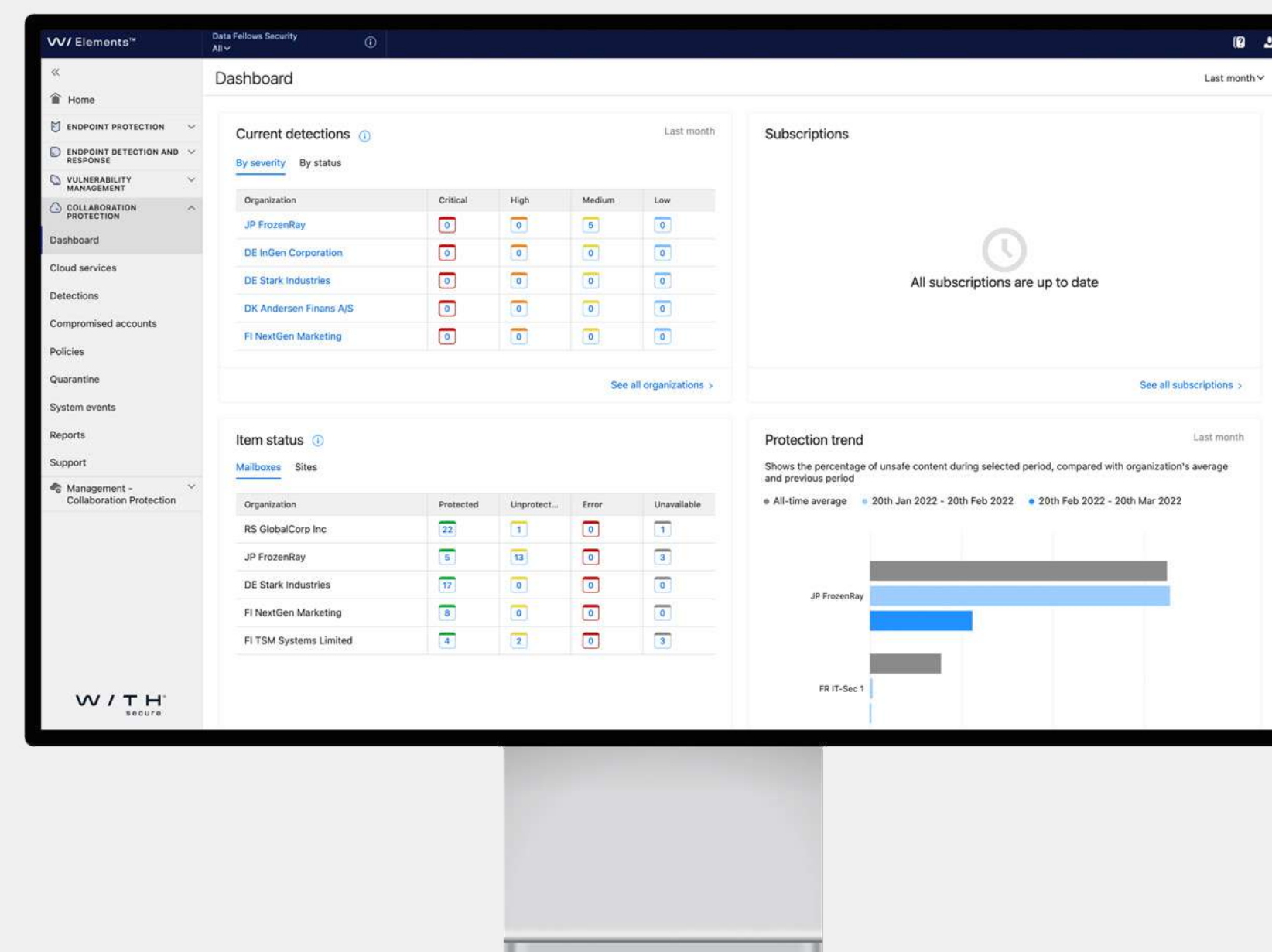
As a Microsoft 365 cloud service user, you are responsible for the security of the data stored within it.

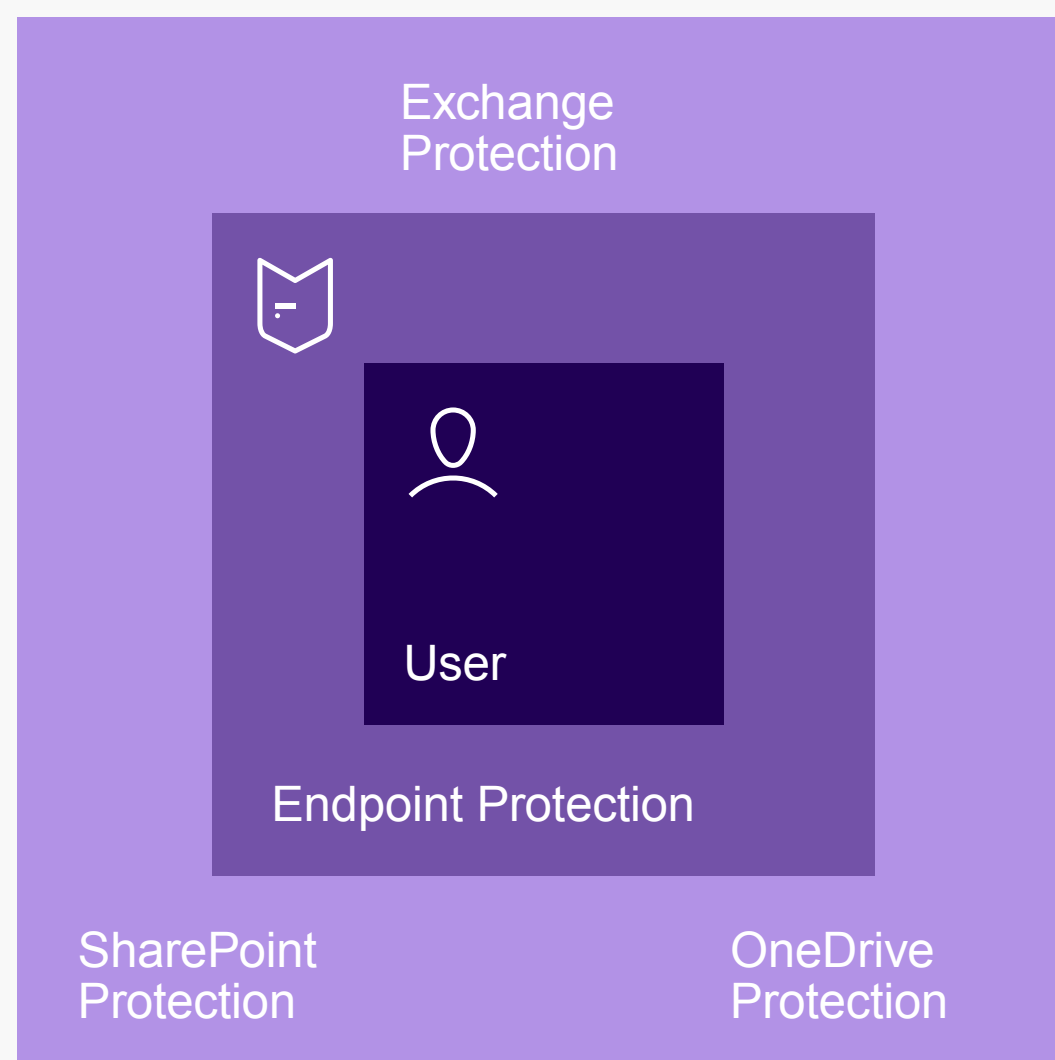
Microsoft's advanced security features are only available in high-tier enterprise plans.

Efficient cloud-native protection for your Microsoft 365 environment

WithSecure™ Elements Collaboration Protection fortifies Microsoft 365's native security capabilities against increasingly sophisticated phishing attacks and malicious content across email, calendar, tasks, SharePoint, Teams and OneDrive.

- ✓ Protect your Microsoft Exchange Online, OneDrive, Teams and SharePoint against advanced cyber threats
- ✓ Continuously monitor and accurately detect malicious content, inbox behavior, and impersonations regardless of how end-users access the service
- ✓ Do more with less through automation
- ✓ Get unified and efficient protection by combining the full WithSecure™ Elements suite
- ✓ Secure a fluctuating number of inboxes without hassle using our flexible subscription plans
- ✓ Deploy in minutes using seamless cloud-to-cloud integration





You can stop the vast majority of cyber threats by layering preventive security capabilities.

Safe email, safe inbox

Although today's email threats are getting more and more sophisticated, email providers' built-in security measures only get you so far. In practice, they mostly filter out spam. You can't control every click, and there's always room for human error. Traditional security tools lack the capability to detect never-before-seen zero-day attacks and stealthier maneuvers.

Microsoft 365 is the world's most popular email service and, therefore, an alluring target for cyber criminals. WithSecure™ Elements Collaboration Protection equips you to prevent the most sophisticated malware, ransomware and malicious URLs from entering your Exchange Online mailboxes. You can detect if an attacker has hijacked your inbox and manipulate it with forwarding rules. You'll be notified if your company email credentials have been breached – including which ones and when – and if the sender is an impersonator.

- Detect even the most sophisticated malware by running and analyzing suspicious files discovered on Microsoft Exchange Online
- Detect if your company accounts have been breached using comprehensive information about how, what, when and severity
- Detect behavioral anomalies such as malicious forwarding rules

Safe file collaboration

Your file sharing and storage services are a goldmine of confidential company information. They also offer a pathway for attackers to distribute malicious content such as files and URLs. 190 million global users ensure that Microsoft SharePoint is an appealing playground for cybercriminals. Same applies to OneDrive file service and Teams collaboration platform. Further, security risks surface especially when folders are shared with external users.

WithSecure™ Elements Collaboration Protection offers advanced SharePoint, Teams and OneDrive protection. It automatically scans and analyzes files for unsafe content, such as viruses, trojans, ransomware, and other sophisticated malware. Advanced cloud sandboxing technology empowers you and even stops zero-day malware attacks.

Integrating email and collaboration protection

WithSecure™ Elements Collaboration Protection is an integral security module of the unified cloud-based WithSecure™ Elements cyber security platform, extending your protection from endpoints to cloud services. You can efficiently manage your core security capabilities through a single portal, with unified data across all components. Combine vulnerability management, endpoint protection, endpoint detection and response, and collaboration protection – or pick-and choose the capabilities you need.

Integration between solutions makes it easier for you to connect an endpoint threat detection with a specific email threat. You can see the big picture and remain situationally aware of your security status from anywhere.

Maximum protection, maximum ROI

WithSecure™ Elements Collaboration Protection is a cost-efficient choice when you want to ensure comprehensive security capabilities. It also allows you to protect your Microsoft 365 environment without having to fork out for high-tier Microsoft 365 plans.

Scan for harmful content automatically

Whenever an end user stores a file in Share-Point, Teams or OneDrive, receives an item on Microsoft Outlook, or creates it – such as an email, appointment, task, contact or note in their mailbox – every attachment, file and URL is analyzed for harmful content. This includes malware, Trojans, ransomware or phishing.

Outwit attackers with real-time threat intelligence

At the solution's core is WithSecure™ Security Cloud, a cloud-based threat analysis and detection service. The service utilizes real-time threat intelligence gathered from tens of millions of security sensors. Our analyst teams look out for new threats before they hit and relentlessly fine-tune algorithms.

Advanced sandboxing discovers the stealthiest threats

If the solution spots something that is suspicious but not recognized by the Security Cloud, a comprehensive analysis takes place in an isolated sandboxing environment. Threat intelligence is then combined with multi-engine antivirus and heuristic analysis, allowing malicious content to be safely detected and blocked from entering your systems.

Discover if your company accounts have been breached

Business email accounts are often linked to multiple business-critical systems. If account credentials end up in the hands of attackers, they can access company systems and impersonate the breached user. This kind

of social engineering tactic is both effective and hard to detect. However, WithSecure™ Elements Collaboration Protection notifies you instantly if your accounts have been breached.

Detect inbox rule manipulations

You can scan all the inbox rules in your mailboxes to spot suspicious processes. This lets you detect if the attacker has set incoming emails to be forwarded straight into their hands or whether emails are deleted automatically.

Customize and align with your policies

Easily customize configurations, alerts, user notifications, and automated actions according to your company's security policies.

Integrate seamlessly

WithSecure™ Elements Collaboration Protection is deployed with cloud-to-cloud integration. Removing the need for additional software installations or server configurations makes the solution an integral component of the unified WithSecure™ Elements platform. By combining core cyber security capabilities into one platform, you can simplify your operations without overlaps and inefficiencies.

Safeguard your digital collaboration. Upgrade your Microsoft 365 security today.

[Request a free trial](#)

Who We Are



WithSecure™, formerly F-Secure Business, is cyber security's reliable partner. IT service providers, MSSPs and businesses – along with the largest financial institutions, manufacturers, and thousands of the world's most advanced communications and technology providers – trust us for outcome-based cyber security that protects and enables their operations. Our AI-driven protection secures endpoints and cloud collaboration, and our intelligent detection and response are powered by experts who identify business risks by proactively hunting for threats and confronting live attacks. Our consultants partner with enterprises and tech challengers to build resilience through evidence-based security advice. With more than 30 years of experience in building technology that meets business objectives, we've built our portfolio to grow with our partners through flexible commercial models.

WithSecure™ Corporation was founded in 1988, and is listed on NASDAQ OMX Helsinki Ltd.

總代理

湛揚科技

www.t-tech.com.tw

台北：(02)2515-1585

高雄：(07)972-7388

技服電話：(02)2515-1599

技服信箱：support@t-tech.com.tw